

Name: _____

Theme Based Study Sheet

Snake facts - true or false

1. Snakes belong to the animal group called reptiles.
2. Snakes are cold blooded.
3. Snakes are covered in plates and scales.
4. Snakes are found in many habitats including in the water.
5. Snakes use their forked tongue to smell the air.

How many snake facts can you find?

"S" words

How many words can you find that begin and end with "s"? (Words like: "snakes" and "slithers".)

_____	_____
_____	_____
_____	_____
_____	_____
_____	_____

Snake colours and patterns

Some snakes have bright and colourful patterns.

These colours and patterns warn other animals that they are dangerous.

On a separate page, draw some examples of different snakes. Name the snakes and where they are found.

For example, the Coral snake found in America has bright yellow, black and red bands and is very dangerous.

Number crunchers

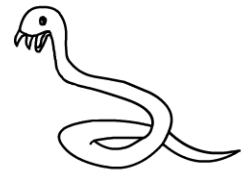
Sally, Peter, Jack and Saran each have a pet snake.

Sally's snake is 55 cm long.

Peter's snake is 60 cm long.

Jack's snake is 75 cm long.

Saran's snake is 45 cm long.



Who has the longest pet snake?

Who has the shortest pet snake?

What is the total length of all the snakes?

How much longer is Jack's pet snake than Saran's snake?

How much longer is Peter's pet snake than Sally's snake?

If Sally's pet snake doubled in size, how long would it be?

A hanging spiral snake

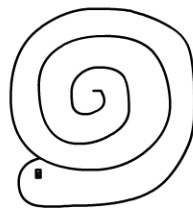
Draw a spiral on a sheet of paper or cardboard.

Paint or draw with crayon, an interesting "snake" pattern.

Draw an eye and add the mouth and forked tongue.

Cut out the snake.

Make a small hole near the head, tie some string and hang.



For more fun and revision you can play games online using Studyladder's website.