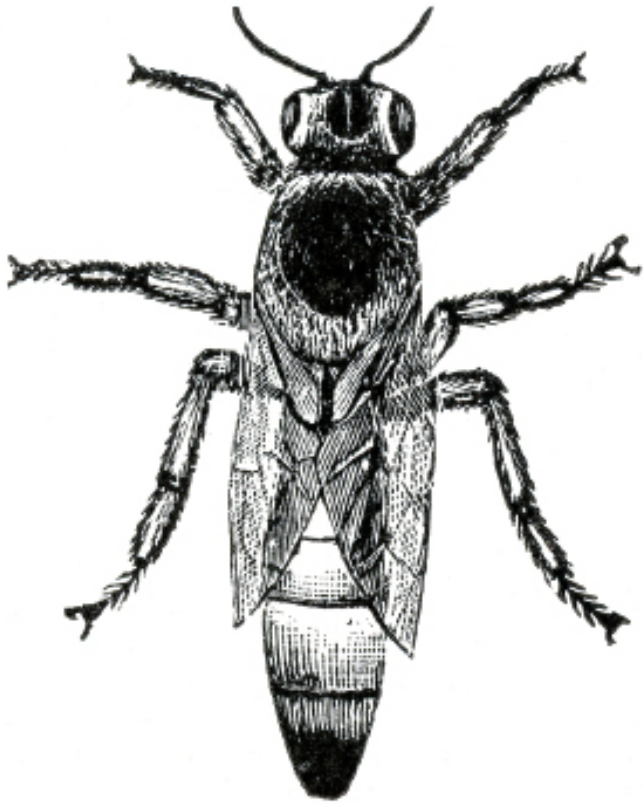


# Life Cycle of a Bee



# The different jobs of bees in the hive:



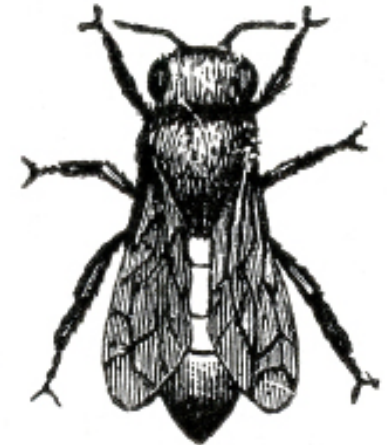
## Queen

The queen lays eggs in each brood cell in the hive.



## Drone

A drone bee is a male bee. Their sole purpose is to mate with the queen bee. They do not have stingers and they do not collect pollen.



## Worker

Worker bees are non-producing females. Workers care for the queen and the young. Some workers leave the hive to collect pollen.

# Life Cycle of a Bee



egg  
3 days

larva  
5-6 days

pupa  
8-16 days

Total Development:  
queens: 16 days  
workers: 18-22 days  
drones: 24 days



The queen bee lays an egg in each brood cell. Larvae hatch from the eggs after 3-4 days. The larvae take about 5-6 days to grow big enough to enter the pupa stage.



The young bees develop inside their cells that are sealed with wax. The larger cells contain queens or drones. Adult bees will emerge from the pupa stage after 8-16 days. Queens develop the fastest.