

'Types of animals' words

- mammals
- reptiles
- amphibians
- birds
- fish
- vertebrates
- invertebrates
- arachnids
- molluscs
- insects

Mammal or Reptile?

crocodile: _____

polar bear: _____

lion: _____

lizard: _____

monkey: _____

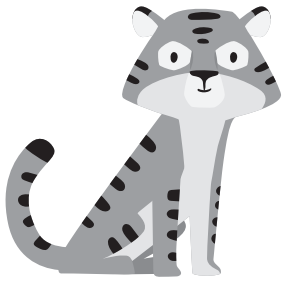
turtle: _____

snake: _____

giraffe: _____



What's the difference between a 'vertebrate' and an 'invertebrate'?



Is a tiger a vertebrate or an invertebrate? Why?

1) What's spider, an arachnid or an insect? _____

2) What's a pelican, a fish or an insect? _____

3) What's a snail, a mollusc or an insect? _____

4) Which is the correct meaning for an amphibian?

An animal (such as a frog or toad) that can live both on land and in water.

An animal (such as a snake, lizard, turtle, or alligator) that has cold blood.

5) Which is true about reptiles?

Reptiles lay eggs.

Reptiles give birth to live young.

