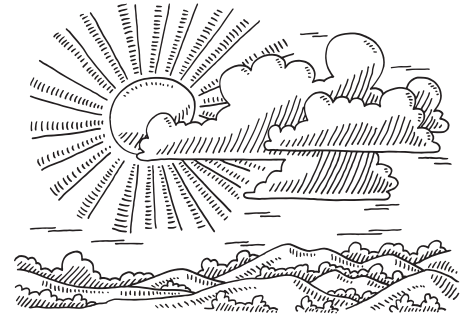


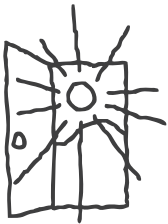
WHAT IS THE SUN MADE OF ?

The Sun is a fiery ball of gas made mainly of _____ and _____. Nuclear reactions in the Sun's core change hydrogen into helium. The energy produced by these reactions is released as _____ and _____.



DISTANCE AND SPEED

The Earth is _____ km away from the Sun. The light from the Sun reaches us in _____ minutes. It travels at a speed of 299 792 _____ per second. That's faster than you can blink! Nothing on Earth travels as fast as light.



WHY CAN'T WE SEE THE SUN'S LIGHT AT NIGHT ?



Draw and Explain: