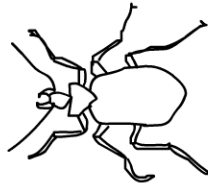


Name: _____

Theme Based Study Sheet

Did you know this about beetles?



Beetles make up one quarter of all known forms of life on Earth.

Beetles have a hard exoskeleton, a body with six legs, and two pairs of wings.

The rhinoceros beetle can lift 850 times its own weight. For its size, that makes it the strongest animal in the world.

Some beetles even like to swim.

Do you know any more interesting beetle facts?

Ladybirds

Ladybirds are also called lady beetles or ladybugs. They are a very useful type of beetle because they eat plant-eating insects, such as aphids.

Ladybirds usually have distinctive spots and attractive colours that warn predators not to eat them because they taste bad.

On a separate page, draw a picture of a ladybird showing its bright colours and patterns.

Scarab beetles.

In ancient Egypt the scarab beetle was a sacred symbol.

Ancient Egyptians used the design of a scarab beetle in jewelry, good luck charms, and amulets.

Find some pictures of scarab beetles.

Use these pictures to get ideas to create your own scarab beetle jewelry.

Draw designs for a range of pendants, bracelets, necklaces or rings.

A Beetle Song

There are many poems and songs about insects, for example "The ants go marching".

Can you think of any more insect songs and poems?

Write your own short song about a beetle.

You may write the words and put them to a well known tune or you can create your own music to accompany your song.

Grids Locating position on a grid.

I														
			Henry								Sammy			
		Fizz					Lady							
											Cherry			
							Beatie							
A														
	1													12

1. What's the name of the beetle is at H2?
2. What's the name of the beetle is at E5?
3. What's the name of the beetle is at H9?
4. What are the grid coordinates of the beetle named Fizz?
5. What are the grid coordinates of the beetle named Henry?



For more fun and revision you can play games online using Studyladder's website.